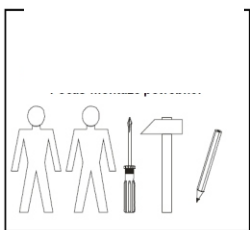
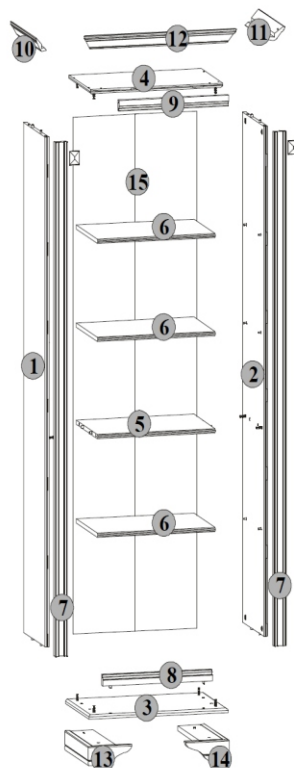


STYLIUS

NREG 60o

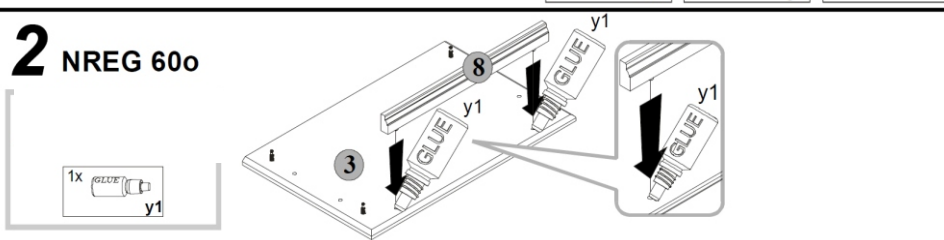
	A	B	C	D
1	1857x328	S21-125	1/4	
2	1857x328	S21-126	1/4	
3	573x361	S21-203	2/4	
4	548x328	S21-207	2/4	
5	484x327	S21-317	1/4	
6	484x327	S21-318	1/4	
7	1873x50	S21-573	3/4	
8	450x40	S21-574	3/4	
9	450x40	S21-575	3/4	
10	387x79	S21-1571	3/4	
11	387x79	S21-1572	3/4	
12	623x79	S21-1573	3/4	
13	180x365	S21-2575	4/4	
14	180x365	S21-2576	4/4	
15	1884x511	S21-905	1/4	



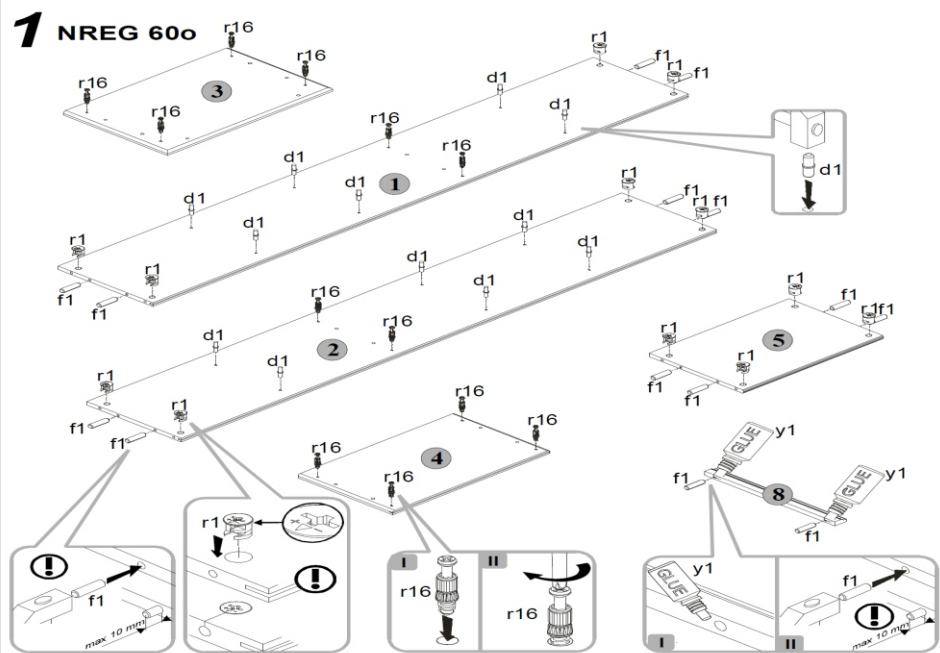
- 12x $\phi 5 \times 17$ mm d1
- 4x $\phi 7 \times 28$ mm e22
- 14x $\phi 8 \times 30$ mm f1
- 16x $46 \times 18 \times 4$ mm f11
- 60x l1
- 2x $4 \times 2 \times 5 \times 7$ mm l21
- 2x $36 \times 26 \times 161 - 129$ n40
- 2x $50 \times 12 \times 13,5 \times 1,5$ mm n54
- 2x $\phi 3,5 \times 10$ mm p35
- 2x $\phi 3,5 \times 16$ mm p38
- 4x $\phi 3 \times 7$ mm p46
- 12x $\phi 1,5 \times 12$ mm #16 r1
- 12x r16
- 4x $\phi 3,5 \times 20$ mm p20
- 8x $\phi 16$ s2
- 1x GLUE y1
- 1x z1



2 NREG 60o



1 NREG 60o



- 12x $\phi 1 \times 7$ mm d1
- 14x $\phi 8 \times 30$ mm f1
- 12x $\phi 1,5 \times 12$ mm #16 r1
- 12x r16
- 1x GLUE y1

3 NREG 60o

